

## TDB Series



- 1.0" x 1.0" square base (5 heights)
- Voltage Range: 10V-125V
- Cap Range: 750uF – 150,000uF

## TDD Series



- 1.4" x 1.4" square base (5 heights)
- Voltage Range: 10V-125V
- Cap Range: 1.5mF - 300mF

## TDE Series



- 1.4" x 1.4" square base (4 heights)
- Voltage Range: 60V-110V
- Cap Range: 2.2mF - 25mF

## THQ Series



- 1.4" round base (5 heights)
- Voltage Range: 10V-125V
- Cap Range: 1.1mF - 200mF

## THQA2/M2/S2 Series



- 0.6" round base
- M2 - mounting case option
- S2 – High Shock Option
- Voltage Range: 10V-125V
- Cap Range: 215uF – 10,00uF

## HyCap Series



- Axial Form Factor
- 3 case sizes – T1, T2, T4
- Voltage Range: 10V-150V
- Cap Range: 2uF – 2700uF
- High temp 200°C options available

## Modules



- Configurable with any Quantic Evans capacitor
- Available in 2 – 8 capacitor assemblies
- Can choose connector, wiring, orientation, and more

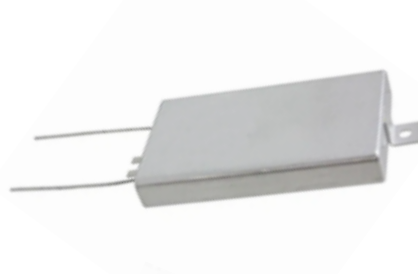
## Capattery



- Double layer carbon capacitor technology
- Voltage range: 5.5V – 11V
- Capacitance range: 0.47F – 1F
- High shock options available

## Capacitor options to solve a 100V and 8,000 $\mu$ F requirement

### Aluminum Flatpack



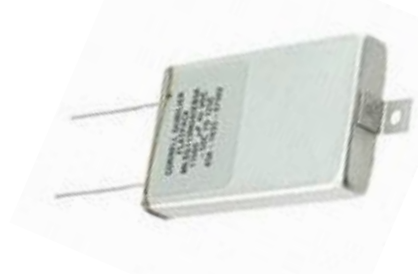
MLP272M100EB0A  
**100V and 2,700 $\mu$ F** per unit  
3 required  
1.75" x 0.5" x 3.0"  
Volume  $\approx$  7.875 in<sup>3</sup>  
Footprint = 15.75 in<sup>2</sup>  
Weight = 198g

### Traditional Wet Tantalum



DLA-10004-13  
**100V and 400 $\mu$ F** per unit  
21 required  
0.375" D x 1.062" L  
Volume  $\approx$  4.5 in<sup>3</sup>  
Footprint = 11.9 in<sup>2</sup>  
Weight = 450g

### Aluminum Flatpack Stainless Steel Cased



MLSG132M100EB0D  
**100V and 1,300 $\mu$ F** per unit  
8 required  
1.75" x 0.5" x 3.0"  
Volume  $\approx$  21. in<sup>3</sup>  
Footprint = 42 in<sup>2</sup>  
Weight = 744g

### Extended Range Wet Tantalum



HC4D100881  
**100V and 880 $\mu$ F** per unit  
9 required  
0.375" D x 1.062" L  
Volume  $\approx$  1.34 in<sup>3</sup>  
Footprint = 3.6 in<sup>2</sup>  
Weight = 135g

### Aluminum Flatpack Stainless Steel + Hermetic



MLSH401M100JK0C  
**100V and 400 $\mu$ F** per unit  
37 required  
1.0" x 0.5" x 1.5" Volume  $\approx$  27.8 in<sup>3</sup>  
Footprint = 55.5 in<sup>2</sup>  
Weight = 1184g

### Hybrid Wet Tantalum



EVANS TDD4100882  
**100V and 8,800 $\mu$ F** per unit  
1 required  
1.4" x 1.4" X 0.755"  
Volume  $\approx$  1.5 in<sup>3</sup>  
Footprint = 2.0 in<sup>2</sup>  
Weight = 145g